

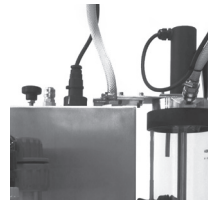
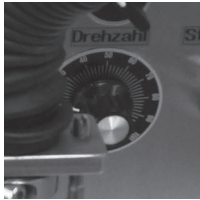
MT 1

SIEVE RESIDUE TESTING DEVICE



HITEC

LUXEMBOURG



TEST SET MT 1 TESTING STATION FOR THE ANALYSIS OF SIEVE RESIDUE

FUNCTIONAL PRINCIPLE

Inside the testing device the pigment or extender to be tested is brought into a circular movement by a water jet rotor which is situated inside the vessel. The fine materials are separated from the coarse materials by the water and the fine particles are flushed through a sieve. The sieve residue is dried and gravimetrically analysed according to the guidelines. Appropriate sieves (main range ISO 565) must be used according to the different testing guidelines. Furthermore, the recommendations of the DIN EN ISO 787-18 must be used.

The percentage of the components of impurities is specifically prescribed and is analysed in order to maintain the desired product quality. The TEST SET MT 1 testing device quickly provides the result which can be adjusted to the prescribed limiting values within the quality control. The TEST SET MT 1 is particularly important for extruded products and spinnable fibres. It provides reproducible results even for the most difficult products.

EXAMPLES FOR APPLICATION

The TEST SET MT 1 is used worldwide for the testing of inorganic pigments, aerosils, silanes and carbons and also for materials like zinc oxide. Applications for organic polymers are possible in selected cases.

VISIT OUR SHOP TO GET MORE INFORMATION

SHOP.HITEC.LU

KEY FEATURES

Used for gravimetrical analysis and checks of pigments and fillers / extenders within the quality control

Mechanical flushing method (according to F. Mocker)

Functional principle according to DIN EN ISO 787-18

- Design according to DIN EN ISO 787-18
- Measurement ranges from 0,010 mm to 0,9 mm
- Easy handling and evaluation
- Handy screens (diameter 50 mm, weight from 5 g)
- Easy sieve entry and removal
- Absolute reproducibility of screening results
- No dust forming due to sealed construction
- Glass vessel for observation of process
- Reliable and durable technology
- Easy servicing
- Compact space saving design
- Automatic lifting system for vessel lid
- Low noise level

HITEC Luxembourg S.A.

Tel +352 498478 - 1 Fax +352 401303 Email sales@hitec.lu Web www.hitec.lu
49, rue du Baerendall - L-8212 Mamer

The TEST SET MT 1 processes more quickly, more safely and with greater cleanliness due to a great number of new features. Controlling water quality, flow and pressure is of particular importance. All components that are necessary for a reproducible test are integrated into the TEST SET MT 1 testing station. An electronic water switch off clock automatically limits the flushing time. A quick, simple and clean entry and removal of the sieve is guaranteed due to a new quick fastening system. The TEST SET MT 1 comes with an integrated discharge unit and a discharge hose of 1 meter length, so that it can be used as a table top device. The following additional components are offered as accessories for products that are difficult to screen: Filling Funnel Type DW with flushing/cleansing ring, mirror and agitator for convenient fill in.

ACCESSORY

- Sieve pocket lens for an easy and fast inspection of sieve material acc. DIN EN 565, 3310-1
- Precision-tool 1,0 / 1,05 mm for checking of the diameter of nozzles for quality control
- Flow meter for flow rate measurement
- Pump for pressure increase

PERFORMANCE FEATURES

Range of application:	Wet sieving, separation, cleansing from mud, screen cut
Input materials:	Powder, suspension and mud
Number of fractions:	Standard 1 (max. 3)
Charge/solid matter amount:	5 to 200 g

DEVICE COMPONENTS

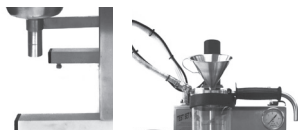
- Quick, clean and simple fastening due to a quick fastening system
- Screen observation through a glass vessel
- Automatic water switch off clock for flushing time limiting
- Water filter protects against external impurities
- Pressure reducing valve for constant pressure conditions
- Manometer for pressure control
- Flow meter for water volume control
- Automatic lifting device for vessel lid

SPECIFICATIONS*

Case:	Stainless steel	Pressure reducing valve:	Ms, adjustable 0 – 6 bar
Analysis sample vessel:	Glass / Ms, stainless steel / Ms	Water pressure (set acc. to DIN):	3 bar
Vessel lid:	Nickel-faced Ms	Flow meter:	60 – 600 l/h
Engine:	24 V DC 10 rpm	Total flow:	300 l/h
Power supply:	110 V or 230 V 50 Hz	Flow at the nozzles:	145 l/h
Height:	700 mm	Water clock:	0 – 60 min
Height ext. vessel lid:	900 mm	Input funnel:	Stainless steel
Width incl. water filter:	345 mm	Discharge unit w/ hose:	Stainless steel
Depth incl. stand unit:	420 mm	Noise parameters:	DIN 45635-01
Weight:	29 kg	Emission value at work place:	L pA eq = 50 dB (A)
Water filter:	PA, < 60 micron		

SIEVES ACCORDING ISO 565 DIN 3310-1

Sieves with a diameter of 50 mm and a weight of 5 g with or without an impact tongue are used according to different test methods. These screens make the handling for the user very simple and allow the weighing by using standard analytical balances. The sieves ring is supplied in either plastic (type A) or stainless steel (type B). The screen cloth is testing screen cloth according to DIN 9044 ISO 4783. It is possible to obtain testing certificates or other 3.1 B according to DIN EN 10204 or factory certificates 2.2.



For more information contact your HITEC Luxembourg representative:
Tel +352 498478 - 1 **Fax** +352 401303 **Email** sales@hitec.lu **Web** www.hitec.lu
 49, rue du Baerendall - L-8212 Mamer